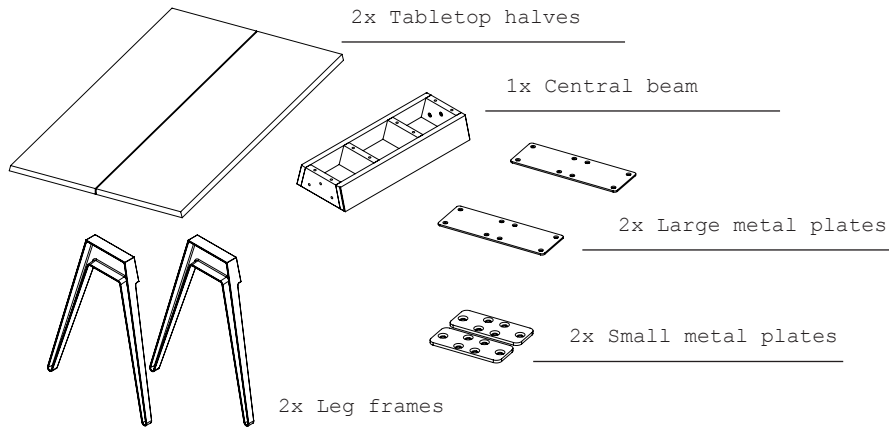


ASSEMBLY INSTRUCTIONS

WELLES TABLE BY MATTHEW HILTON

PARTS



HARDWARE

(28x) M8x20 bolts



(8x-12x) M8x80 bolts



(6x) M8x35 bolts



(14x-18x) M8 washer



YOU WILL NEED

6mm and 5mm heavy duty Allen Keys
The help of a friend

NOTES

NOTE 1: Be certain that all assembly is carried out on a flat and stable surface. This will ensure a good final result. Reverse the steps to disassemble the piece.

NOTE 2: Your furniture arrives packed in numerous layers that protect it during transport. It is important that you remove the packaging carefully to avoid damaging your furniture. Refer to our information sheet "Unpacking Your Furniture" for further details.

NOTE 3: Great care is required when assembling our products . Use blankets to soften the assembly surface - hard surfaces such as wood or stone flooring may damage the furniture if in direct contact.

NOTE 4: We advise that assembly and disassembly of De La Espada furniture is undertaken by a minimum of 2 people.

NOTE 5: When screwing in bolts, tighten well, but be sure NOT TO OVERTIGHTEN. This can cause the thread to strip thus resulting in a poor connection.

O
1
M
A
T
T
H
E
W
H
I
L
T
O
N

ASSEMBLY INSTRUCTIONS CONTINUED

WELLES TABLE

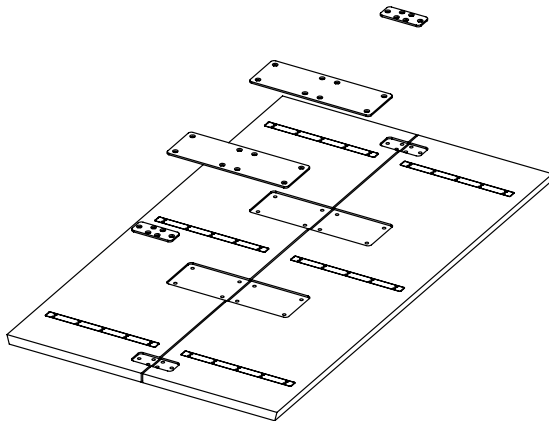
NOTE 6: All mating parts are numbered. You will ensure the best possible fit if all parts are mated with the corresponding numbered parts. While you work, be sure all connections are flush with no gaps.

INSTRUCTIONS

1) ASSEMBLE THE TABLETOP

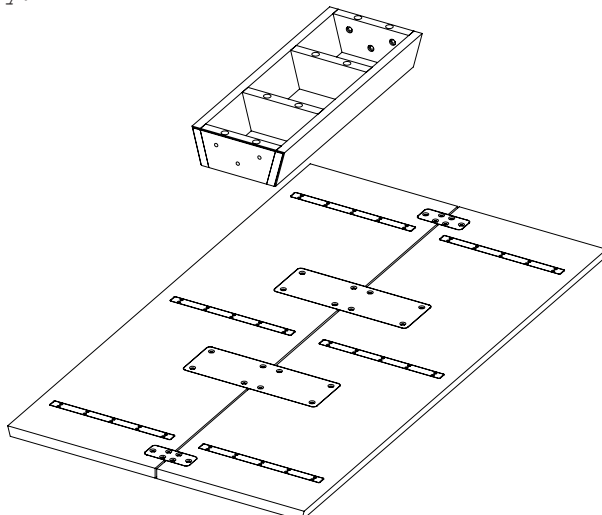
a) Place the tabletops face down on the floor.

b) Attach the metal plates to the underside of the tabletop. The parts are numbered, and it is essential that all parts are matched to their corresponding numbers (1 to 1, 2 to 2, etc). Please the large metal plates and small metal plates into the corresponding rebates in the tabletop. Be sure to align the ends of the table and create an even gap between the tabletops. Insert the conical M8x20 bolts through the metal plates and tighten using a 5mm Allen key.



2) ATTACH THE CENTRAL BEAM TO THE TABLETOP

a) Match the numbers on the central beam to those on the tabletop. Insert the M8x80 bolts with washers and tighten with a 6mm Allen Key.



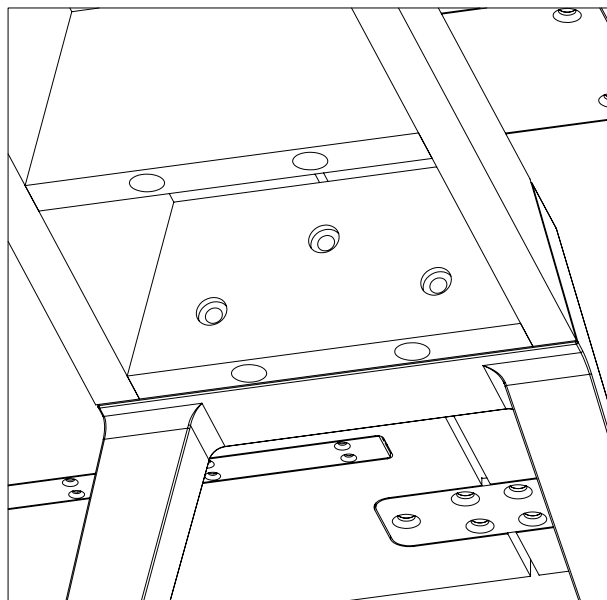
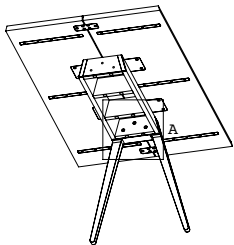
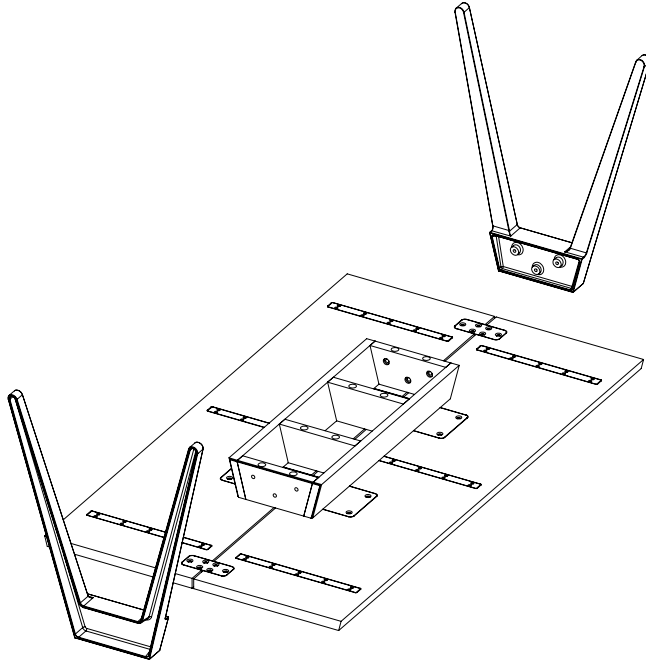
0
2
M
A
T
T
H
E
W
H
I
L
E
I
N

ASSEMBLY INSTRUCTIONS CONTINUED

WELLES TABLE

3) ATTACH THE LEGS TO THE TABLETOP

a) Using three M8x35 bolts and 3 washers for each leg structure, attach the legs to the central beam. Tighten with a 5mm Allen Key.



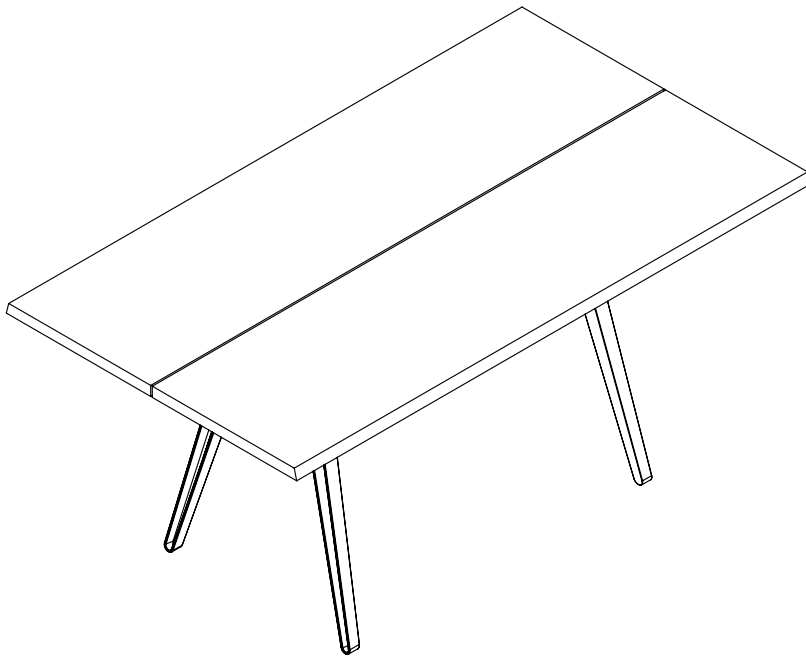
0
3
M
A
T
T
H
E
W
H
I
L
H
I
C
N

ASSEMBLY INSTRUCTIONS CONTINUED

WELLES TABLE

4) TURN TABLE INTO NATURAL POSITION

a) With the help of a partner, flip the table so that it is resting on its legs. Please ensure that the table is not rested on two legs as it is flipped over as this may cause damage to the table.



5) LEVELLING THE TABLE

If the table is rocking, slightly loosen the 3 bolts connecting the legs to the central beam. If this is done while the table is in its natural upright position, it will allow the legs to settle into the best position for the floor upon which it rests. After finding the best position, tighten the bolts firmly.

6) The table assembly is now complete and the table is ready for use.

O
4
M
A
T
T
H
E
W
H
I
L
H
I
O
N