

homesandproperty.co.uk with Zoopla

Design Homes & Property

Furniture designer Matthew Hilton tells **Katie Law** his Tate Modern secret, how he covets a £15,000 bicycle, and reveals that location is all when it comes to his home



Attractions: Tate Modern's Turbine Hall

WHERE I LIVE

I live in East Dulwich in a first-floor two-bedroom flat in an old Victorian house. It's a typical London space, you know: stripped wood and white walls, light and large and airy, and I've got lots of my own-designed furniture in it. I live there on my own except for when my 10-year-old son comes to stay.

The best thing about it is its location. It's within cycling distance from my Belton studio and very close to Lordship Lane, which is full of great shops, and there's a swimming pool and a gym round the corner. It's not central London living. It feels more like living in a small town in the best possible way.

FAVOURITE GALLERY

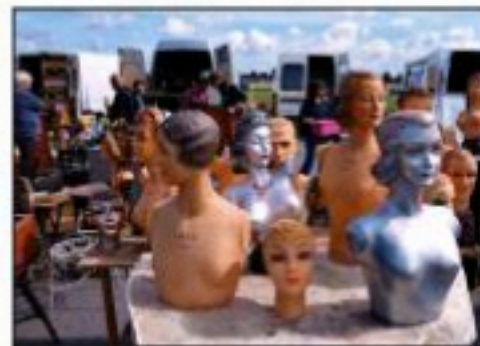
I enjoy going to Tate Modern – but it is as much for its Turbine Hall as for the art. It's almost like an indoor street, like the shopping arcade next to the Duomo in Milan, and it's what attracts so many people.

MY ESCAPE

I like getting on my bike round Dulwich Park on the wide road that runs around the outside. There are always lots of people running, rollerblading and cycling there. The park itself is a lovely old Victorian one with separate areas for football, cricket and tennis, and then areas with little bushes and windy paths and a lake, as if you're in a forest.



Timeless timepiece: Matthew Hilton models his first watch, designed for the Margaret Howell fashion range and just launched. £907 (matthwhilton.com)



Sunbury Antiques Market: get there early for the good stuff

MOST COVETED OBJECT

I'd love a Moulton New Series Double Pylon bicycle (below right) with space frame construction. Beautiful design, works very well, hardy, light, fast and with tiny wheels. A very unusual bike and costs a fortune. About £15,000, I think (moulton.co.uk).

**BEST MARKET**

I go to Sunbury Antiques Market at Kempton Park, which means getting up at five o'clock to get there in time to buy the good stuff. I use what I find mostly for props for photography and trade stands, but then it creeps into my home, too. The best thing I found there was a French decorative metal frame with an old foxed-glass mirror inside. It's beaten up, but beautiful (sunburyantiques.com).

My design London

MY SECRET SHOP

Mint, just off Brompton Road. The owner, Lina Kanafani, is very on the ball and always has interesting things in her store, which are not necessarily objects I want to own but are always fascinating to look at, so I love popping in to see what's new there (mintshop.co.uk).

Refreshing: a glass-topped dining table from Mint

**MOST INTERESTING NEW DESIGNER**

Josh Bittelli is almost not a designer, or certainly not in the way I am. Though he's trained in design, he operates in an unconventional way, more like an artist. He's also very young, so I'm not sure quite where he is going to go yet. I bought some of his vessels (pictured) made from welding rods from his last show, which he called 3D drawings. They're very lovely (joshbittelli.co.uk).

**LAZY SUNDAYS**

They don't happen very often but ideally I'd start with some exercise, like ride a bike for a couple of hours or swim, so I could feel I could then slouch about. I'd watch films. I watch a lot of films and I'll happily go to the cinema and then come home and watch a couple more on my Apple TV. I was surprised but I really enjoyed *Behind the Curtain* recently. It was funny and touching and it had interesting casting.