

DESIGN ART ARCHITECTURE INTERIORS DECORATING ENTERTAINING TRAVEL

# VOCAL

AUSTRALIA **LIVING**

CONSUMER MAGAZINE OF THE YEAR \*

**28** PAGES OF  
**KITCHENS & BATHROOMS** p185

**BOARDROOM  
TO BEDROOM**  
*Tailoring a Melbourne  
heritage building into  
a masculine city apartment* p154

**SÃO PAULO**  
*Brazil's wild  
child grows up* p165

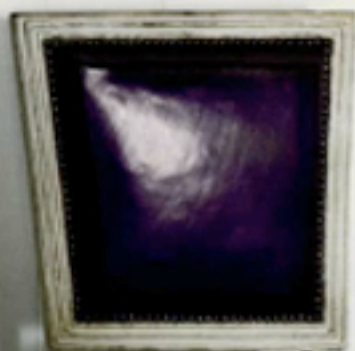
**On the red carpet**  
*Catherine Martins  
cinematic rug collection* p171

**In the spirit with new  
vodka and vermouth**

**AERO DYNAMIC**  
*An artist's Far North  
Queensland retreat* p188



*Modernity*





THE LUXURY OF DESIGNER MATTHEW HILTON'S TIMBER FURNITURE SEEMS MORE APPARENT AND THE COLOUR AND PATTERN OF MISSION MORE MAGNIFICENT AT THE NEW SPENCE & LYDA SHOWROOM, BELOW, IN SYDNEY'S SURRY HILLS. THE STORE'S COLLECTION OF BRANDS, FORMERLY HOUSED DOWN THE ROAD AT FOSTER STREET, NOW HAS ROOM TO BREATHE 184 CHALMERS STREET, SURRY HILLS NSW, (02) 9212 6747. SPENCEANDLYDA.COM.AU



**GENTLY DOES IT**  
 QUERCUS AND CO'S SOFTLY COLOURED RANGE OF WALLPAPERS FEATURE DELICATE HAND-DRAWN PATTERNS THAT REFLECT THEIR CREATOR ADAM JONES'S BACKGROUND IN LANDSCAPE DESIGN. QUERCUSANDCO.COM

## BACK TO BASE

THE HAND-PAINTED BRETON STRIPE ADORNING MAGNOLIA INTERIORS' LAMP BASE IS THE PERFECT COMPLEMENT TO A REDEANT OR ANGLEARK SHED. 1098, MAGNOLIA INTERIORS.COM.AU



## PIPE DREAMS

The Ikea PS 2012 collection springs from the company's archives, revisiting some of its most popular items and reimagining them for contemporary living. The three-seater sofa, right, features contrast blanket stitching while harking at Le Corbusier's 'LCS' sofa with its metal tube frame. \$1199. [Ikea.com.au](http://Ikea.com.au)



Homeowners in Brisbane's Paddington tend to wobble between retro chic and Provincial eclecticism. Happiness Place, pictured, has introduced a fresh mix with its US imports of kaleidoscopic tableware and gifts. The mother and daughter team bring it all together from their respective homes in Brisbane and Nashville. 181 Latrobe Terrace, Paddington Qld, (07) 3367 3114; [happinesplace.com.au](http://happinesplace.com.au)



## RULING SEAT

JIMMY BOSSUM HAS OPENED ITS FIRST STORE SOUTH OF THE YARRA RIVER IN HIGH STREET, BRAND HILL, IN THE CHEVROLET SQUARE, THEATRE RANGE, INCLUDING THAIR JAMES W'GHEAR, 6045, RIGHT, PLUS ARTWORK AND ACCESSORIES, IS NOW ON CORCORATE DRIVE. 885 HIGH STREET, BRAND HILL VIC, 039 822 3710; [JIMMYBOSSUM.COM.AU](http://JIMMYBOSSUM.COM.AU)



PHOTOS: ALEXANDRA GORDON; GORDON PEARCE; JIMMY BOSSUM; TONY PERKINS; GONG WANG; ILLUSTRATION: GONG WANG